

# Engineered for management. Built for the future.

## The next generation of powerful network management systems

Sitehop SAFEnms is a powerful cloud-based Enterprise NMS and easy to use platform that simplifies the deployment and management of global encryption devices. Its intuitive platform enables high speed configuration of certificates and permissions and enables easy management of your fleet of multi-tenanted encryptors.

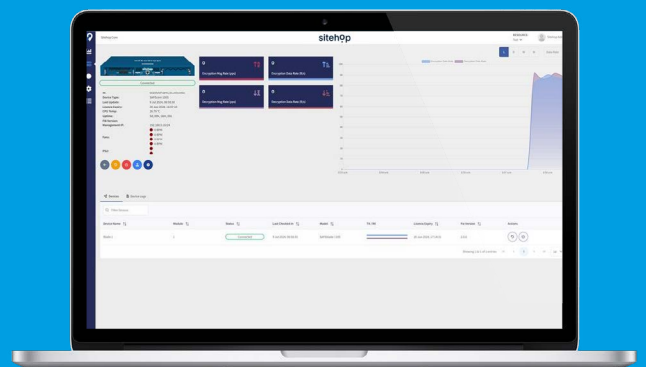
Sitehop SAFEnms lets you configure user's certificates and permissions in minutes. Alternatively, Sitehop can pre-load SAFE Series devices, so they arrive on site ready for installation. Either way, you can then manage your fleet of multi-tenant SAFE Series encryptors from a centralised system.

## Get ready for a seamless transition to PQC

Future-proof your network with high-throughput security that's ready for tomorrow's challenges. Remote firmware updates, managed through Sitehop SAFEnms, ensure a smooth transition to Post Quantum Cryptography (PQC) while maintaining robust protection today.



Single Pane of Glass with real-time insights into network performance.



Organize users into tenants and resource groups, for tailored monitoring, resource allocation, and customized settings

# Sitehop SAFEnms

## Sitehop SAFEnms Features and Benefits



### Centralised dashboard

The dashboard delivers Single Pane of Glass, real-time insights into network performance, displaying total throughput and IPsec connectivity. Through a single view, administrators can organize users into tenants and resource groups, enabling tailored monitoring, resource allocation, and customized security settings for efficient management and optimal performance.



### Certificate management, logging and auditing

Maximize your network's performance with advanced certificate management, data tracking, auditing, and logging features. Harness the power of enterprise grade audit and alerts. These tools provide insight into network activity, ensuring maximum network performance, and that your infrastructure operates at its full potential.



### Role-based access control for all sites

Sitehop SAFEnms offers a flexible, secure role-based permissions system, allowing multi-tenanted configurations for complex networks. This enables precise access control, letting users manage individual sites and separate customers with ease, ensuring only authorized access.



### Simple, stress-free deployment

Designed for rapid setup even in high-pressure environments, SAFEnms minimizes complexity with intuitive workflows, zero-touch provisioning, and centralized control—driving down operational overhead and total cost of ownership.



### Secure remote updates

SAFEnms enables cloud-to-device firmware updates over authenticated, encrypted channels, ensuring only trusted images are installed. Seamless crypto upgrades—including PQC—deliver true crypto agility without downtime or site visits.



### Multi-tenanted separation

SAFEnms supports full customer isolation with dedicated tenants per organization, enabling strict separation of data, policies, and visibility. Each tenant can manage multiple resource groups, mapping to individual SAFEcore or SAFEmini deployments, ensuring secure, scalable control across complex environments.



### REST API integration

Easily integrate Sitehop SAFEnms with your existing OSS/BSS or other management systems using its REST API. This ensures seamless interoperability with your operational workflows and readiness for Infrastructure-as-Code applications.



### Built-In PKI

Sitehop SAFEnms includes a built-in PKI system, enabling users to create and manage certificates, including support for bringing your own third-party certificates.